

Montagehinweis für Untergestelle mit Stahlrohrzarge

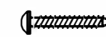
1. Untergestell auspacken und mit den Senkschrauben M6 x 30 mm verschrauben.
2. Drehen sie die Stellschrauben M8 x 25 mm in die Beine des Untergestells.
3. Unter den Stahlrohrzargen wird mittig noch ein Stellfuß platziert.
4. Platzieren Sie das Möbel mittig auf dem Untergestell.
5. Verschrauben sie das Untergestell mit dem Möbel und richtigen sie es mit den Stellschrauben aus.

Senkschraube
M6 x 30mm



M1

RW- Schraube
3 x 16 mm

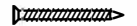


PS1

Stellschraube D20
M8 x 25mm

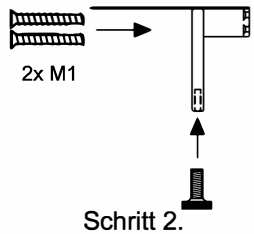


Spax- Schrauben
4 x 55 mm

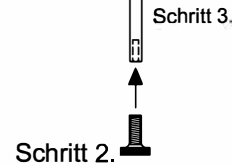
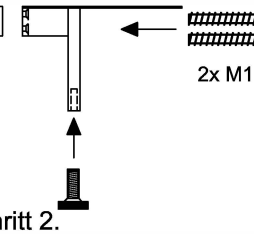


S1

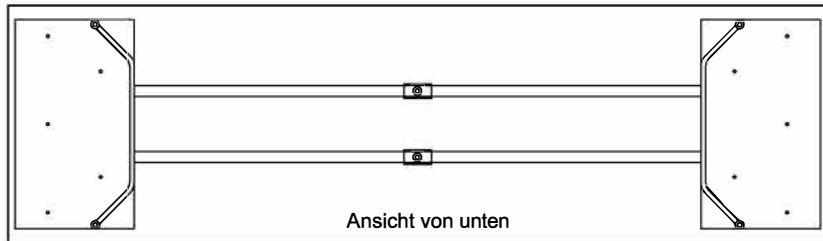
Schritt 1.



Schritt 1.



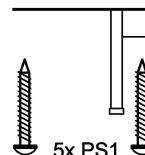
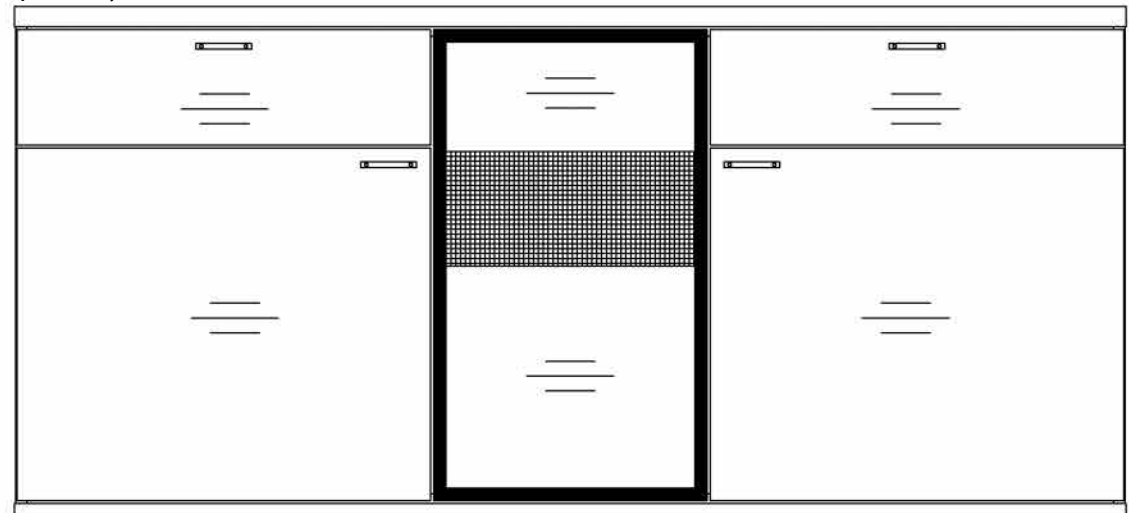
Schritt 4.



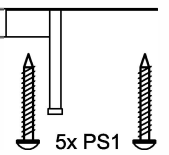
Abstand =

Abstand =

Schritt 5.
(Beispiel Bild)



Je nach länge 2, 4 oder 6x S1



Assembly instructions for under frames with steel tube frame

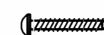
1. Unpack the under frame and screw it with the M6 x 30 mm countersunk screws.
2. Turn the M8 x 25 mm adjusting screw in the legs of the under frame.
3. Below the steel tube frame an additional foot is placed in the middle.
4. Place the cabinet centered on the under frame.
5. Screw the under frame with the cabinet and adjust it with the adjusting screws.

countersunk screw
M6 x 30mm



M1

RW screw
3 x 16 mm



PS1

adjusting screw
D20 M8 x 25mm

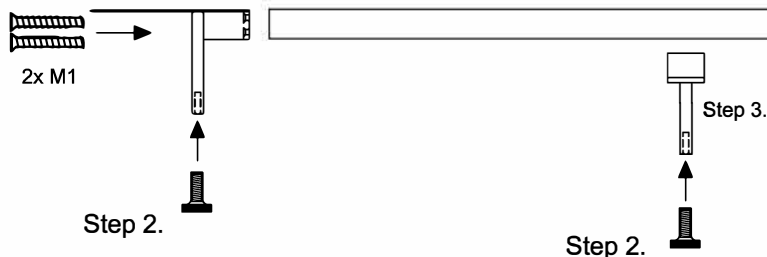


Spax-screw
4 x 55 mm

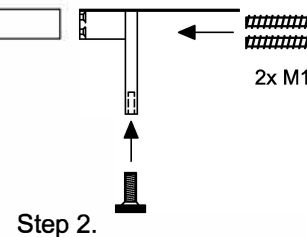


S1

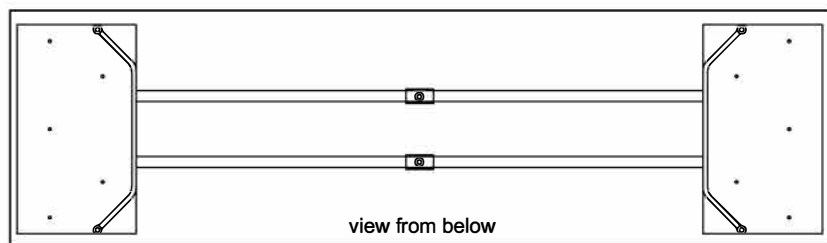
Step 1.



Step 1.



Step 4.

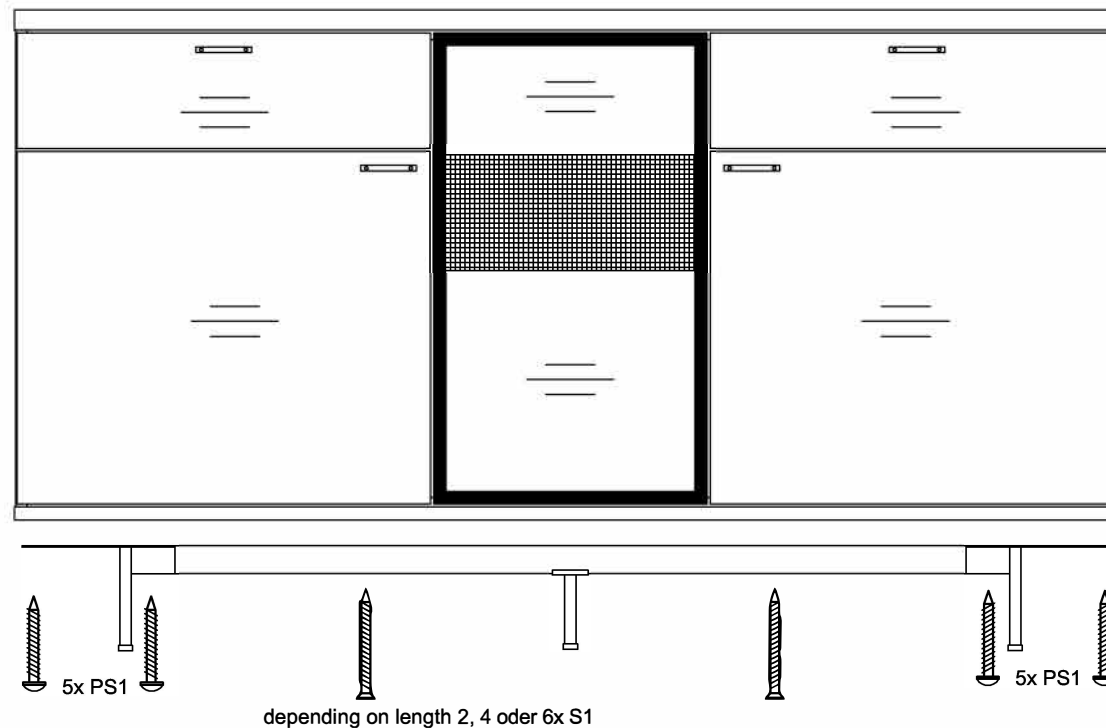


view from below

distance =

distance =

Step 5.



5x PS1

depending on length 2, 4 oder 6x S1

5x PS1

quanto

VENJAKOB

Vorsprung durch Design und Qualität

Montagehinweis für Untergestelle **ohne** Stahlrohrzarge

1. Drehen sie die Stellschrauben M8 x 25 mm in die Beine des Untergestells.
2. Platzieren Sie das Untergestell wie in der Skizze angegeben auf dem Möbel.
3. Verschrauben sie das Untergestell mit dem Möbel und richten sie es mit den Stellschrauben aus.

RW-Schraube
3 x 16 mm
LA0005300S



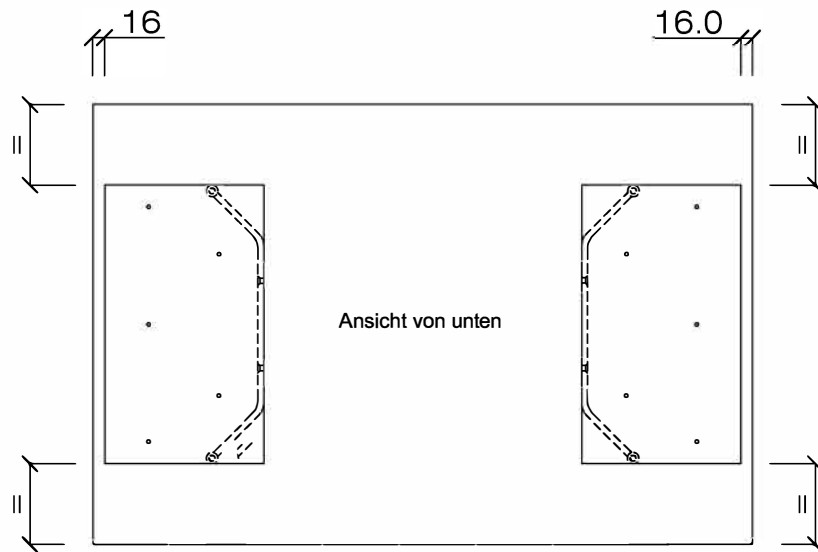
Stellschraube D20
M8 x 25mm
VE0003815



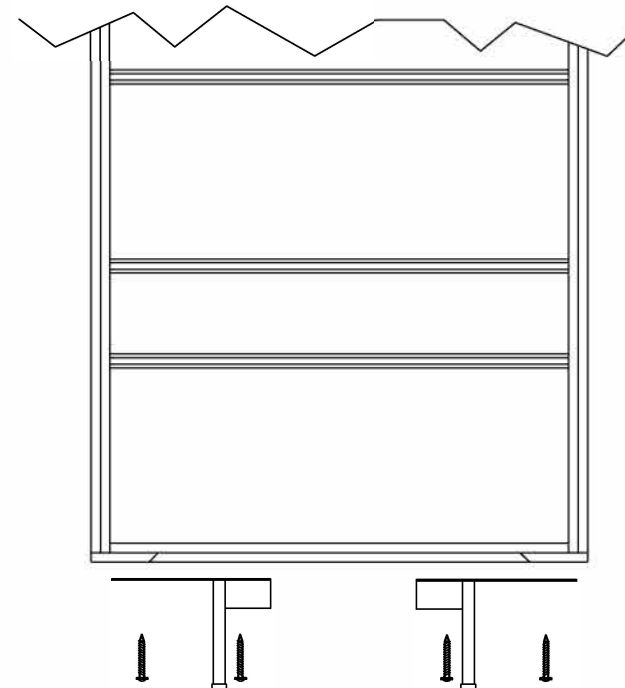
Schritt 1.



Schritt 2.



Schritt 3.



quanto

VENJAKOB

Vorsprung durch Design und Qualität

Assembly instructions for under frames **without** steel tube frame

1. Turn the M8 x 25 mm adjusting screw in the legs of the under frame.
2. Place the underframe on the cabinet as shown in the below drawing.
3. Screw the under frame with the cabinet and adjust it with the adjusting screws.

RW screw
3 x 16 mm

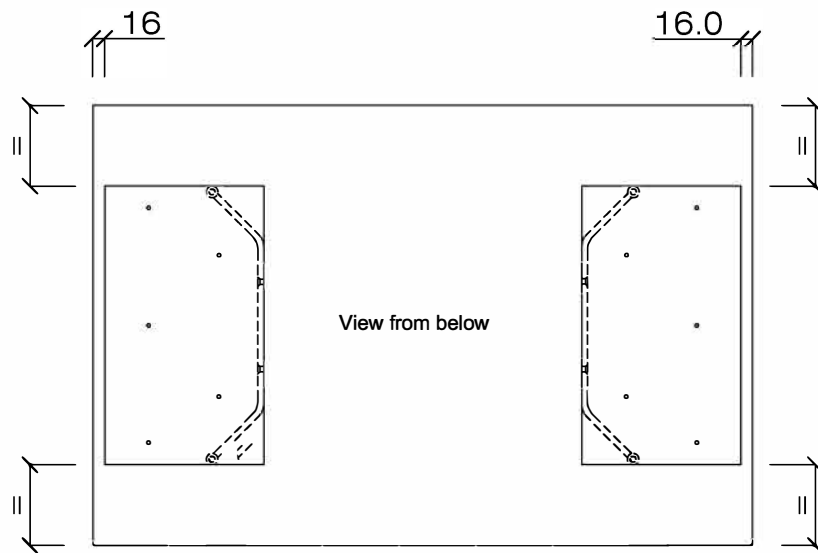
adjusting screw
D20 M8 x 25mm



Step 1.



Step 2.



Step 3.

